

**TOWN OF EDGEWOOD
Resolution No. 2008-07**

**A RESOLUTION
ADOPTING THE OFFICIAL ZONING MAP**

WHEREAS, the Town of Edgewood governing body recognizes that there needs to be a current official zoning map for the Town of Edgewood; and

WHEREAS, these parcels have come before the Town of Edgewood governing body for approval of the zones represented on the attached map;

WHEREAS, the zoning designations indicated for the parcels in question were duly approved by the governing body in accordance with the Town's zoning ordinance;

NOW, THEREFORE, BE IT RESOLVED BY THE TOWN OF EDGEWOOD THAT: the attached map is officially adopted as the zoning map for the Town of Edgewood.

PASSED, APPROVED, and ADOPTED by the Town Council, the governing body of Edgewood, at its regular meeting of February 6, 2008.

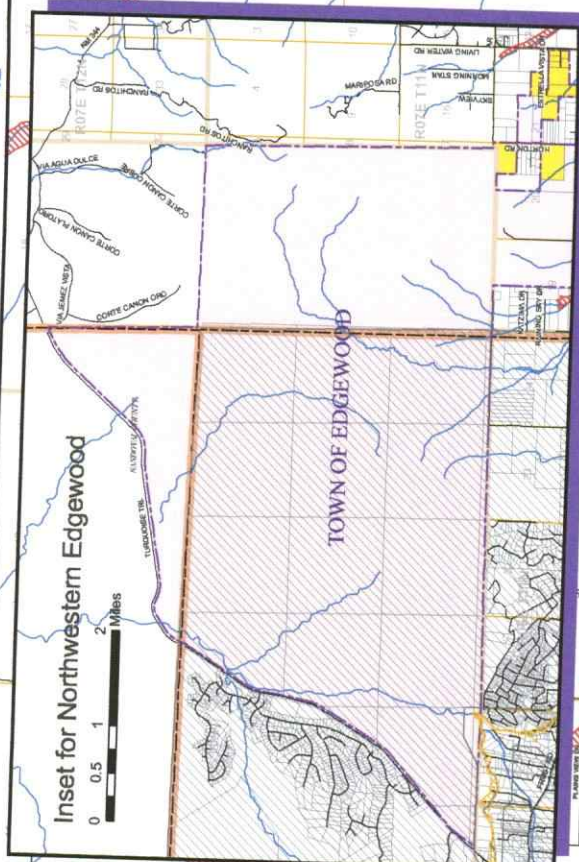
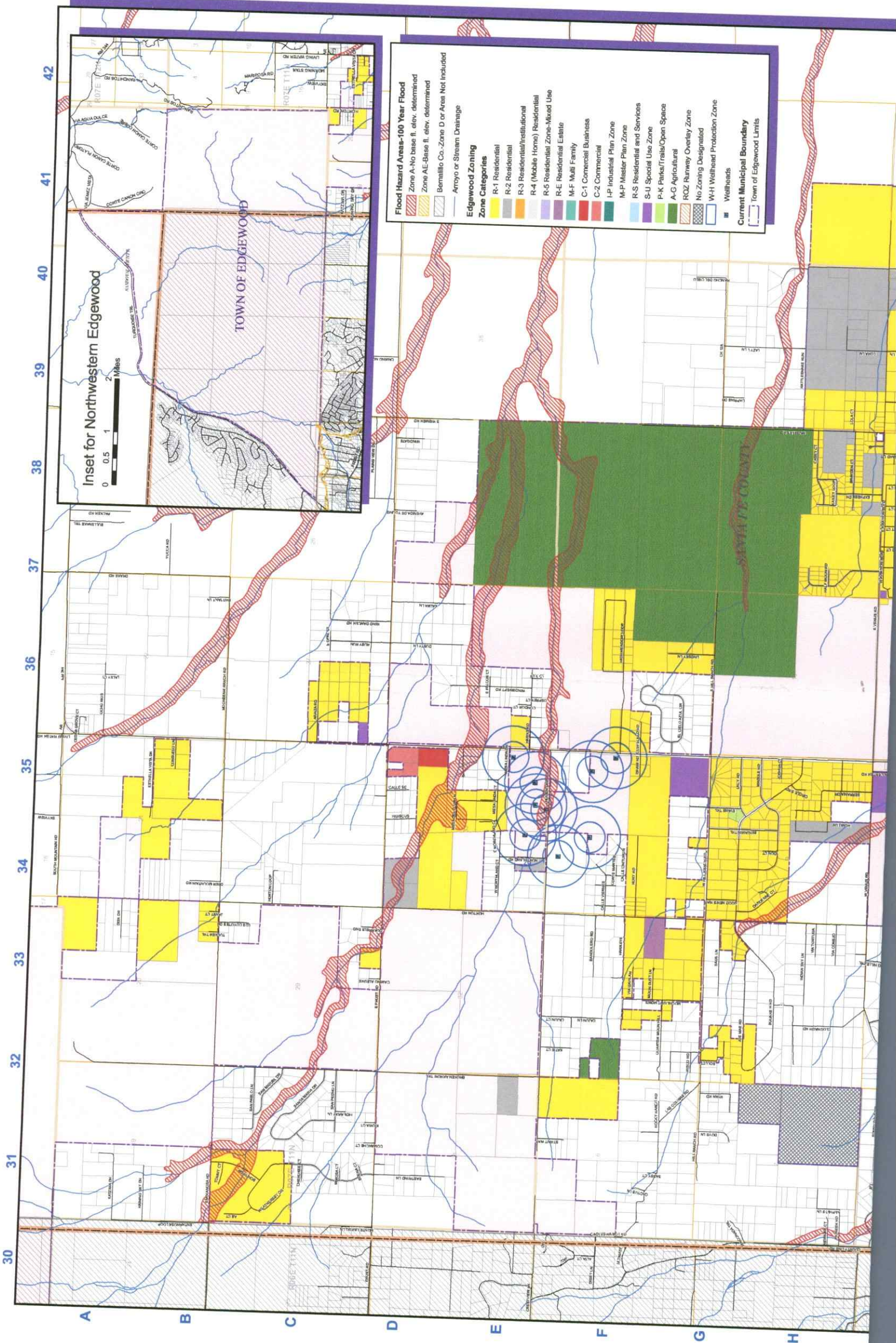
ATTEST:



Mayor – Howard Calkins

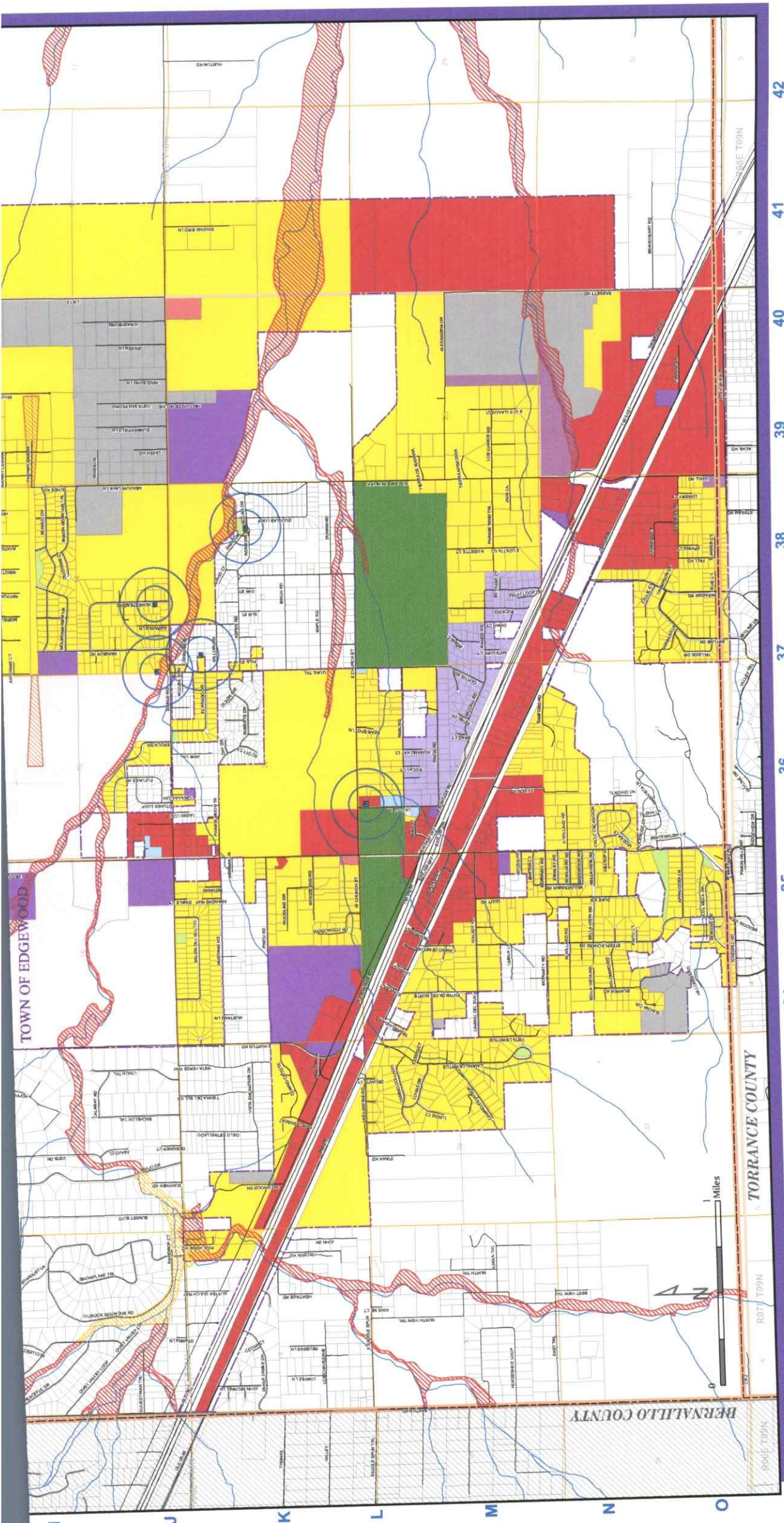


Administrator-Clerk-Treasurer-Jeff Condrey



30 31 32 33 34 35 36 37 38 39 40 41 42

A B C D E F G H



Zone Map

Town of Edgewood

Santa Fe County, NM

January 16, 2008

Sources: FEMA, Preliminary SF Co. FIS-506 (DFRM); Bernalillo County; Town of Edgewood; Santa Fe County.
 Notes: No parcel data is shown in Santa Fe County outside of the immediate area of the Town of Edgewood.

