

**TOWN OF EDGEWOOD  
ORDINANCE NO. 2001- 14**

**AN ORDINANCE ESTABLISHING ZONE DISTRICTS  
FOR CERTAIN LANDS ANNEXED TO THE  
TOWN OF EDGEWOOD, NEW MEXICO.**

**(lands specified in Agreement A-1-b)**

**WHEREAS:** a public hearing, or hearings, regarding this ordinance have been published and held in conformance with the requirements of State law; and

**WHEREAS:** certain lands, other than the Lands of Campbell Farming Corporation, and as specified in Attachment M-1, have been duly annexed to the Town of Edgewood in conformance with SS 3-7-17 and SS 3-57-5, NMSA 1978, Annotated; and

**WHEREAS:** the Town Council has determined that the land uses proposed for said lands are compatible with the Comprehensive Plan of the Town of Edgewood; and


**WHEREAS:** the Town Council has determined that the land uses proposed for said lands preserve or enhance the integrity and character of the area, and the utility and value of the property and of the contiguous zoning districts within the Town; and

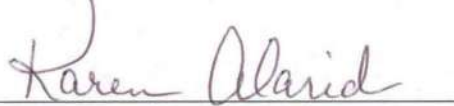
**WHEREAS:** the Town Council has determined that the land uses proposed for said lands will promote and not be detrimental to the public health, safety, or general welfare of the Town;

**THEREFORE:** *BE IT ORDAINED BY THE GOVERNING BODY OF THE TOWN OF EDGEWOOD THAT:*

Any and all such lands specified herein, which have been duly annexed to the Town of Edgewood, are hereby zoned as designated on the map(s) attached hereto in conformance with the Comprehensive Zoning Ordinance of the Town of Edgewood.

**APPROVED, PASSED AND ADOPTED** this December 3, 2001 at an open meeting held at the Edgewood Community Center, Town of Edgewood, New Mexico.

  
Howard Calkins, Mayor

  
Karen Alarid, Clerk-Treasurer

**ATTEST:**

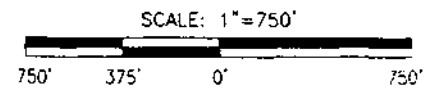
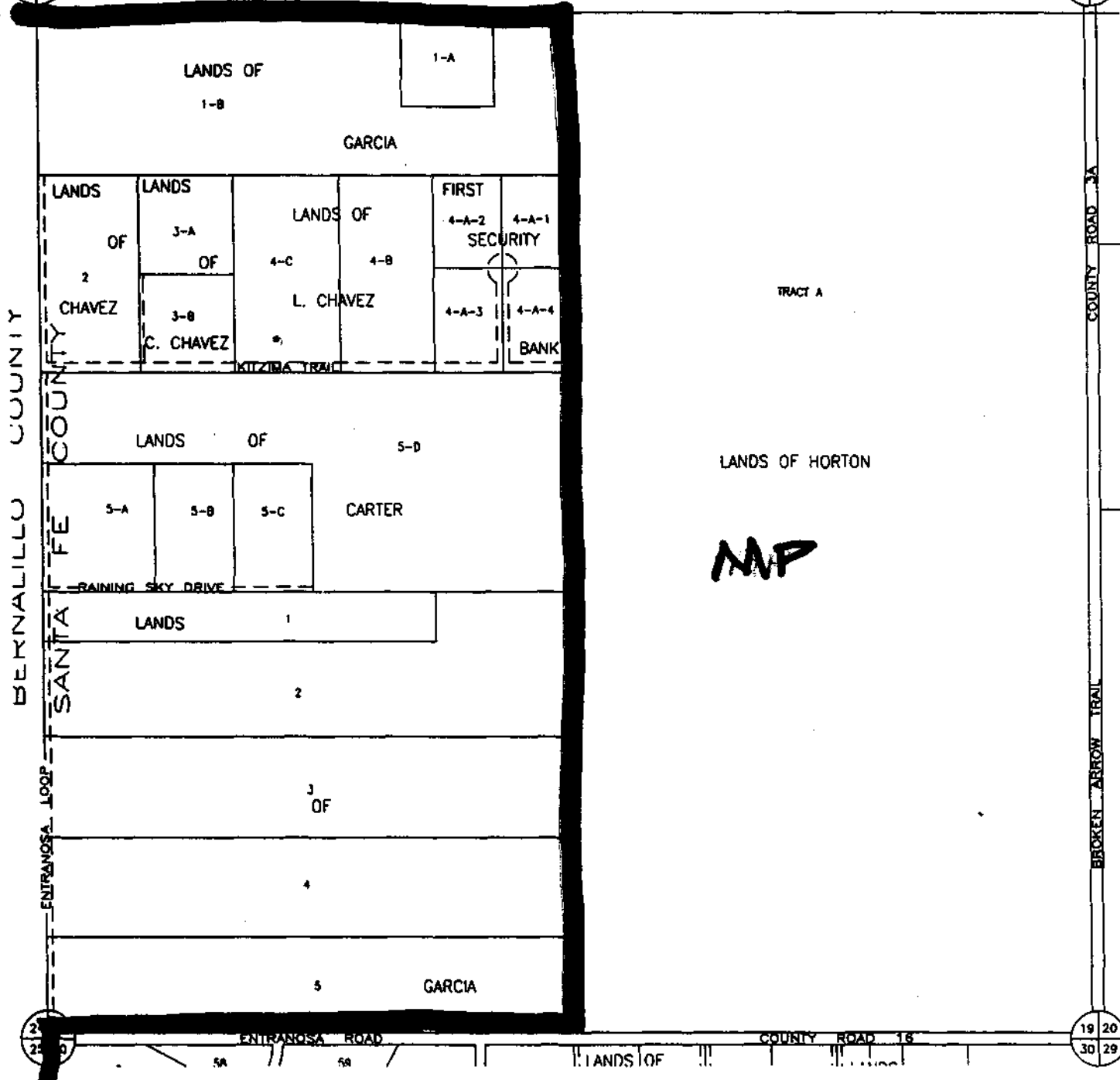


13 18  
24 19

SAN PEDRO GRANT

18 17  
19 20

COPYRIGHT 1999  
ALL RIGHTS RESERVED  
ASSOCIATED  
DEVELOPMENT, INC.



LEGAL DESCRIPTION  
T 11 N  
R 7 E  
SEC 19

UNIFORM PROPERTY CODE  
1037063

MAP AMENDED THROUGH  
JULY 1, 1999

D 37

BERNALILLO COUNTY  
SANTA FE COUNTY

ENTRANOSA LOOP

ENTRANOSA ROAD

COUNTY ROAD 16

COUNTY ROAD 3A

BROKEN ARROW TRAIL

21 20  
22 21

19 20  
30 29

LANDS OF

18 17  
18 20

SAN PEDRO GRANT

20

COPYRIGHT 1999  
ALL RIGHTS RESERVED  
ASSOCIATED  
DEVELOPMENT, INC.

MP

LANDS

MP

LANDS

OF

R-1

PADILLA

LANDS OF GONZALES

PORTION OF SE 1/4

PORTION OF SE 1/4 NE 1/4

LANDS OF CORDOVA

PORTION OF SE 1/4 NE 1/4

MP

S 1/2 NW 1/4  
OF

MP

HORTON

E 1/2 NW 1/4 SE 1/4

NE 1/4 SE 1/4

R-1

SW 1/4

ENTANOSA HIGHLANDS PARTNERSHIP

MP

COUNTY ROAD 2A

BROKEN ARROW TRAIL

LAT

LAT

COUNTY ROAD 2A

N SW

S SW

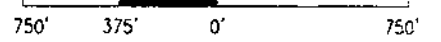
N SW

S SW

20 21



SCALE: 1" = 750'



LEGAL DESCRIPTION

T 11 N

R 7 E

SEC 20

UNIFORM PROPERTY CODE

1038063

MAP AMENDED THROUGH

JULY 1, 1999

D 38

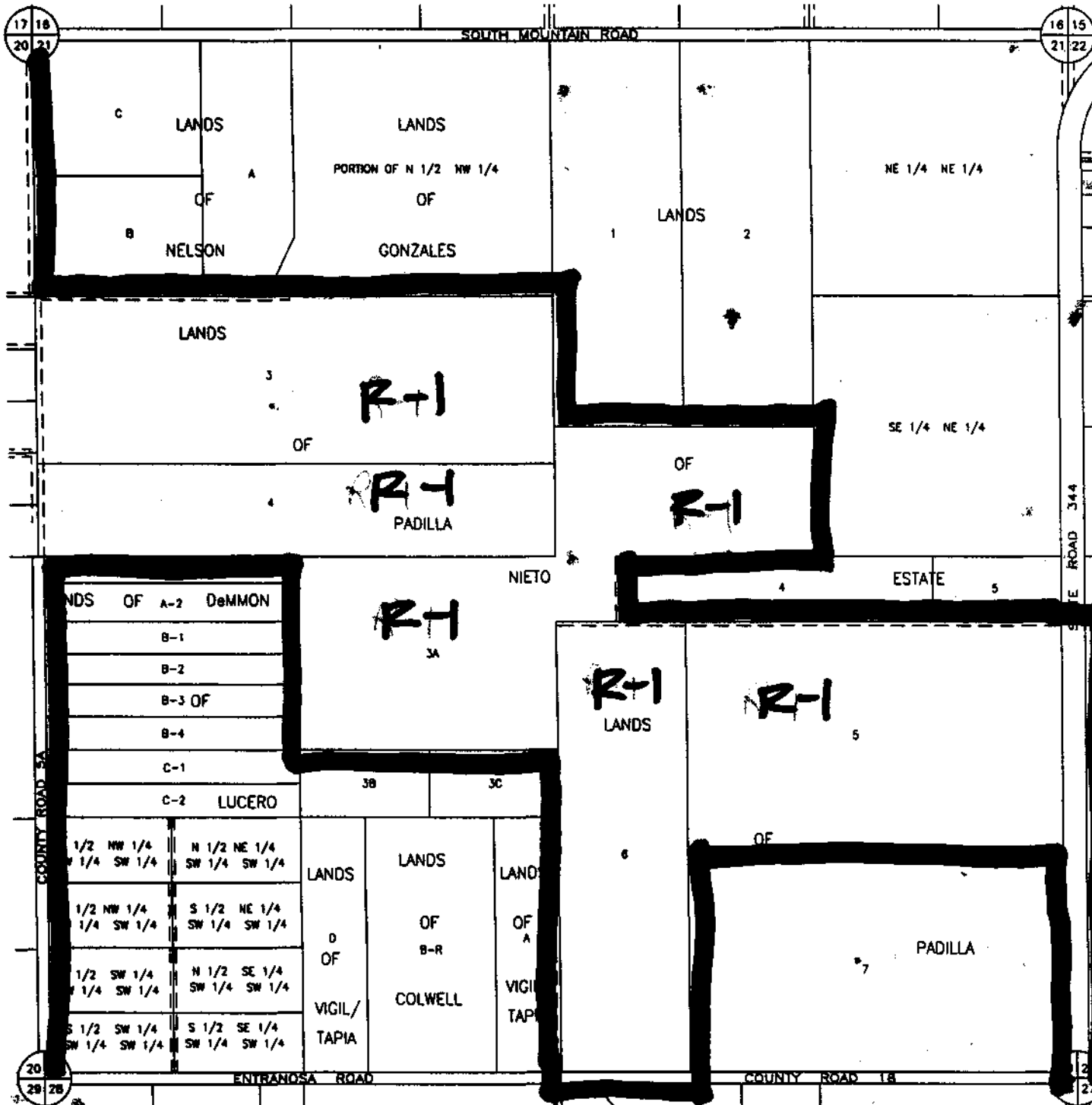
19 20  
19 20

ENTRANOSA ROAD

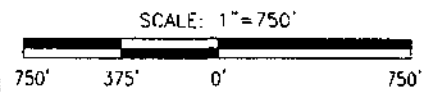
COUNTY ROAD 15

20 21  
20 21

COLLECTED 12/3/2001



COPYRIGHT 1999  
 ALL RIGHTS RESERVED  
 ASSOCIATED  
 DEVELOPMENT, INC.

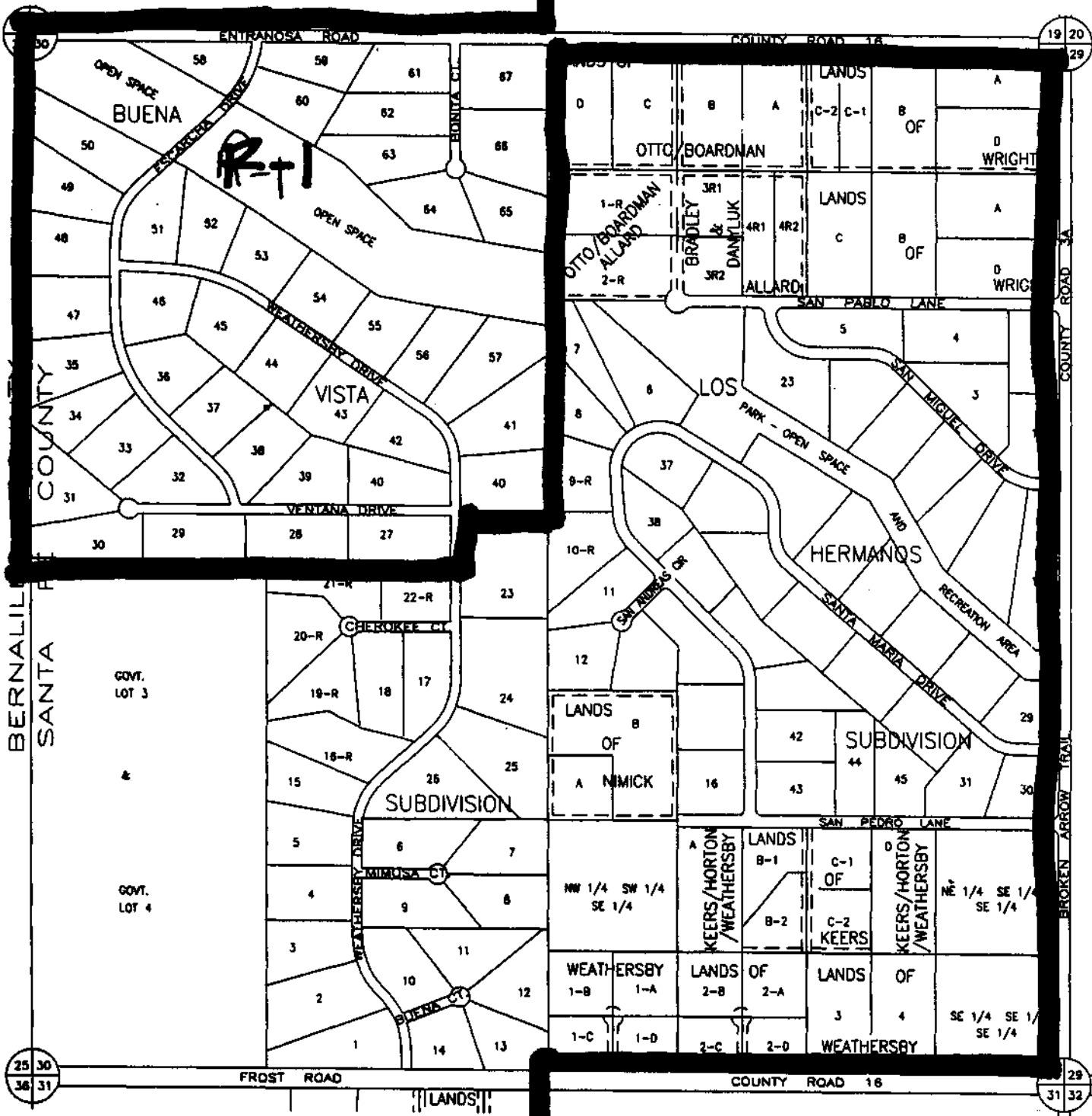


LEGAL DESCRIPTION  
 T 11 N  
 R 7 E  
 SEC 21

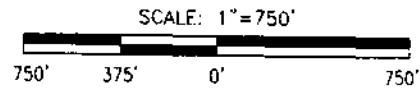
UNIFORM PROPERTY CODE  
 1039063

MAP AMENDED THROUGH  
 JULY 1, 1999

D 39



COPYRIGHT 1999  
 ALL RIGHTS RESERVED  
 ASSOCIATED  
 DEVELOPMENT, INC.

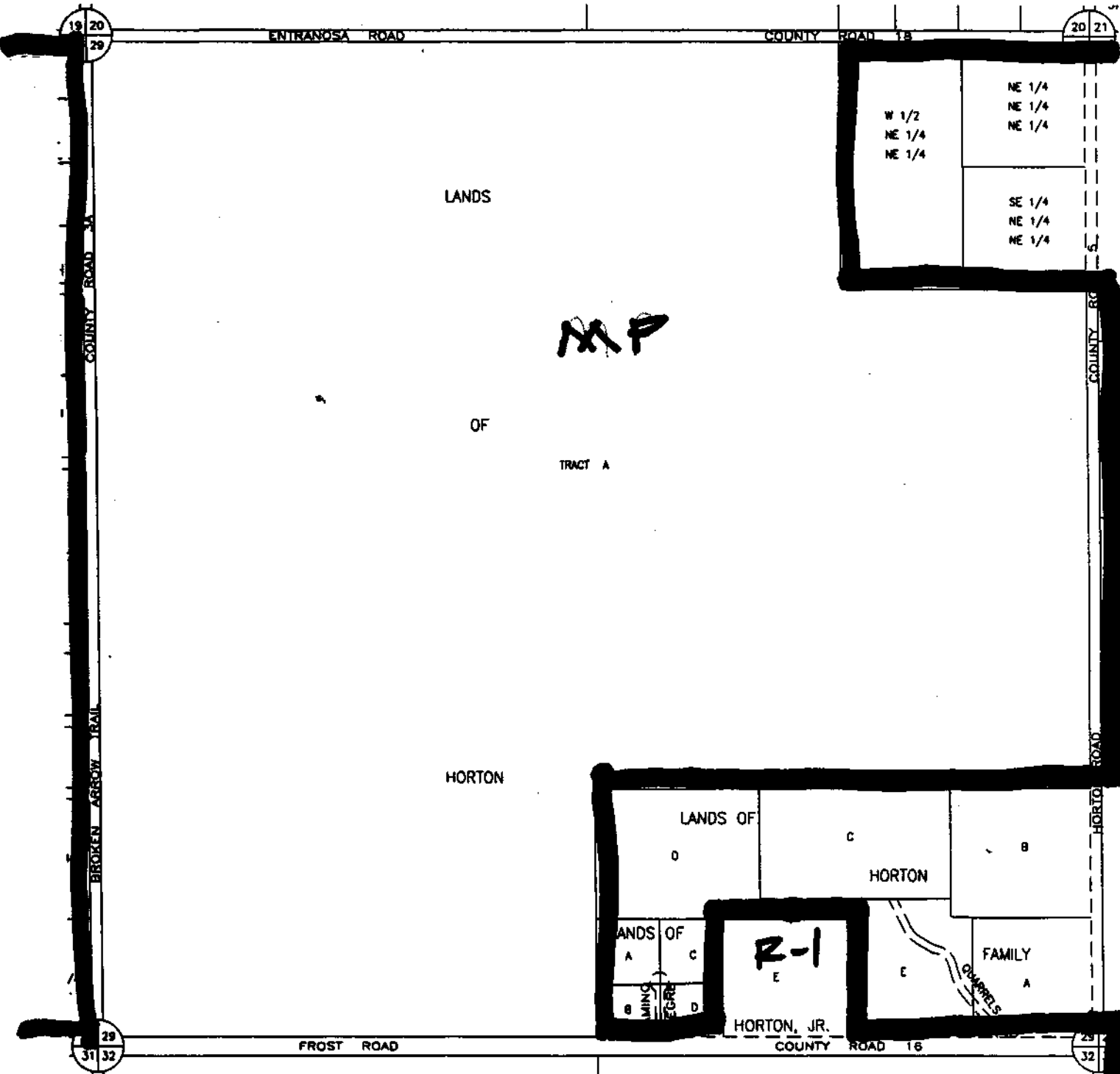


LEGAL DESCRIPTION  
 T 11 N  
 R 7 E  
 SEC 30

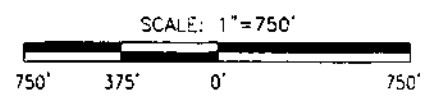
UNIFORM PROPERTY CODE  
 1037062

MAP AMENDED THROUGH  
 JULY 1, 1999

E 37



COPYRIGHT 1999  
 ALL RIGHTS RESERVED  
 ASSOCIATED  
 DEVELOPMENT, INC.

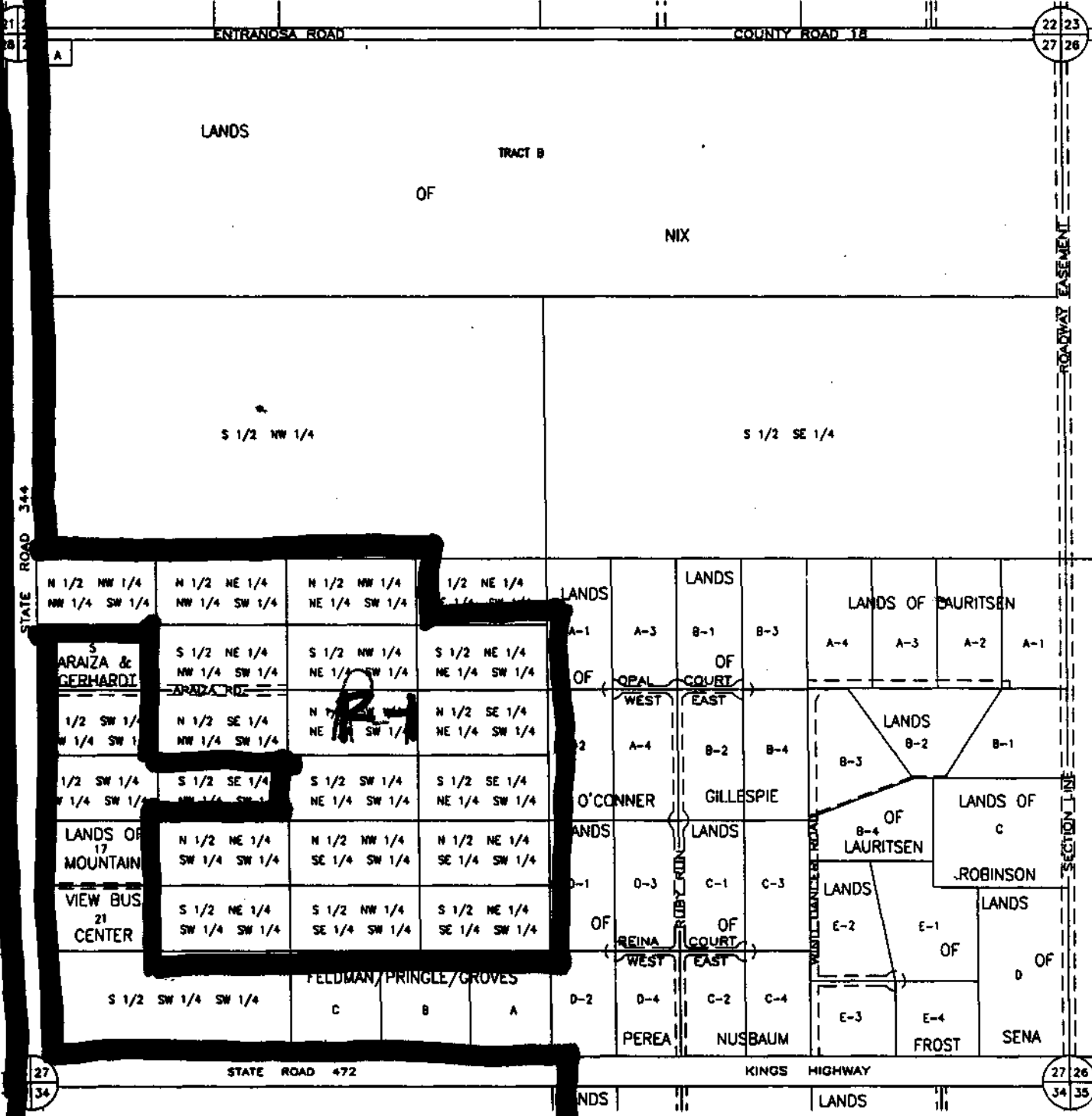


LEGAL DESCRIPTION  
 T 11 N  
 R 7 E  
 SEC 29

UNIFORM PROPERTY CODE  
 1038062

MAP AMENDED THROUGH  
 JULY 1, 1999

E 38



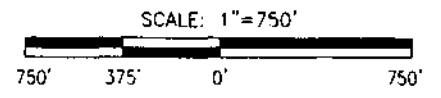
LANDS  
OF  
TRACT B  
NIX

S 1/2 NW 1/4

S 1/2 SE 1/4

N 1/2 NW 1/4 NW 1/4 SW 1/4	N 1/2 NE 1/4 NW 1/4 SW 1/4	N 1/2 NW 1/4 NE 1/4 SW 1/4	N 1/2 NE 1/4 SE 1/4 SW 1/4
S 1/2 NE 1/4 NW 1/4 SW 1/4	S 1/2 NW 1/4 NE 1/4 SW 1/4	S 1/2 NE 1/4 NE 1/4 SW 1/4	S 1/2 NE 1/4 NE 1/4 SW 1/4
N 1/2 SE 1/4 NW 1/4 SW 1/4	N 1/2 SE 1/4 NE 1/4 SW 1/4	N 1/2 SE 1/4 NE 1/4 SW 1/4	N 1/2 SE 1/4 NE 1/4 SW 1/4
S 1/2 SE 1/4 NW 1/4 SW 1/4	S 1/2 SW 1/4 NE 1/4 SW 1/4	S 1/2 SE 1/4 NE 1/4 SW 1/4	S 1/2 SE 1/4 NE 1/4 SW 1/4
N 1/2 NE 1/4 SW 1/4 SW 1/4	N 1/2 NW 1/4 SE 1/4 SW 1/4	N 1/2 NE 1/4 SE 1/4 SW 1/4	N 1/2 NE 1/4 SE 1/4 SW 1/4
S 1/2 NE 1/4 SW 1/4 SW 1/4	S 1/2 NW 1/4 SE 1/4 SW 1/4	S 1/2 NE 1/4 SE 1/4 SW 1/4	S 1/2 NE 1/4 SE 1/4 SW 1/4

COPYRIGHT 1999  
ALL RIGHTS RESERVED  
ASSOCIATED  
DEVELOPMENT, INC.



LEGAL DESCRIPTION  
T 11 N  
R 7 E  
SEC 27

UNIFORM PROPERTY CODE  
1040062

MAP AMENDED THROUGH  
JULY 1, 1999

E 40

25 30  
36 31

29  
31 32

FROST ROAD

COUNTY ROAD 16

COUNTY  
COUNTY

GOVT.  
LOT 1

GOVT.  
LOT 2

LANDS OF B A  
LANDS OF A B C D  
RODRIGUEZ WILSON  
LANDS A  
OF B C  
2 PIPER ENGLAND  
LANDS 1 2  
NW 1/4 SE 1/4 NW 1/4 OF  
4 3 CALI  
LANDS 1  
OF SE 1/4 SE 1/4 NW 1/4  
2

M+P (Agric.)

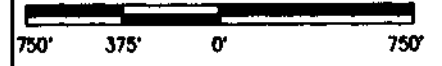
NE 1/4

COPYRIGHT  
ALL RIGHTS RESERVED

ASSOCIATED  
DEVELOPMENT INC.



SCALE: 1" = 750'



SANTA FE

LANDS OF  
MP-(Agric.)<sub>MP</sub>  
TRACT A

HILL

LANDS  
MP<sub>A</sub>  
(Agric.)

MP<sub>B</sub>

OF

MP<sub>D</sub>  
(Agric.)

MP<sub>C</sub>

HIGHLAND STOCK FARM LTD.

LEGAL DESCRIPTION  
T 11 N  
R 7 E  
SEC 31

UNIFORM PROPERTY CODE  
1037081

MAP AMENDED THROUGH  
JULY 1, 1997

F 37

31  
6

31 32  
6 5

SECTION LINE

SECTION LINE





COPYRIGHT  
ALL RIGHTS RESERVED

ASSOCIATED  
DEVELOPMENT INC.



SCALE: 1"=750'

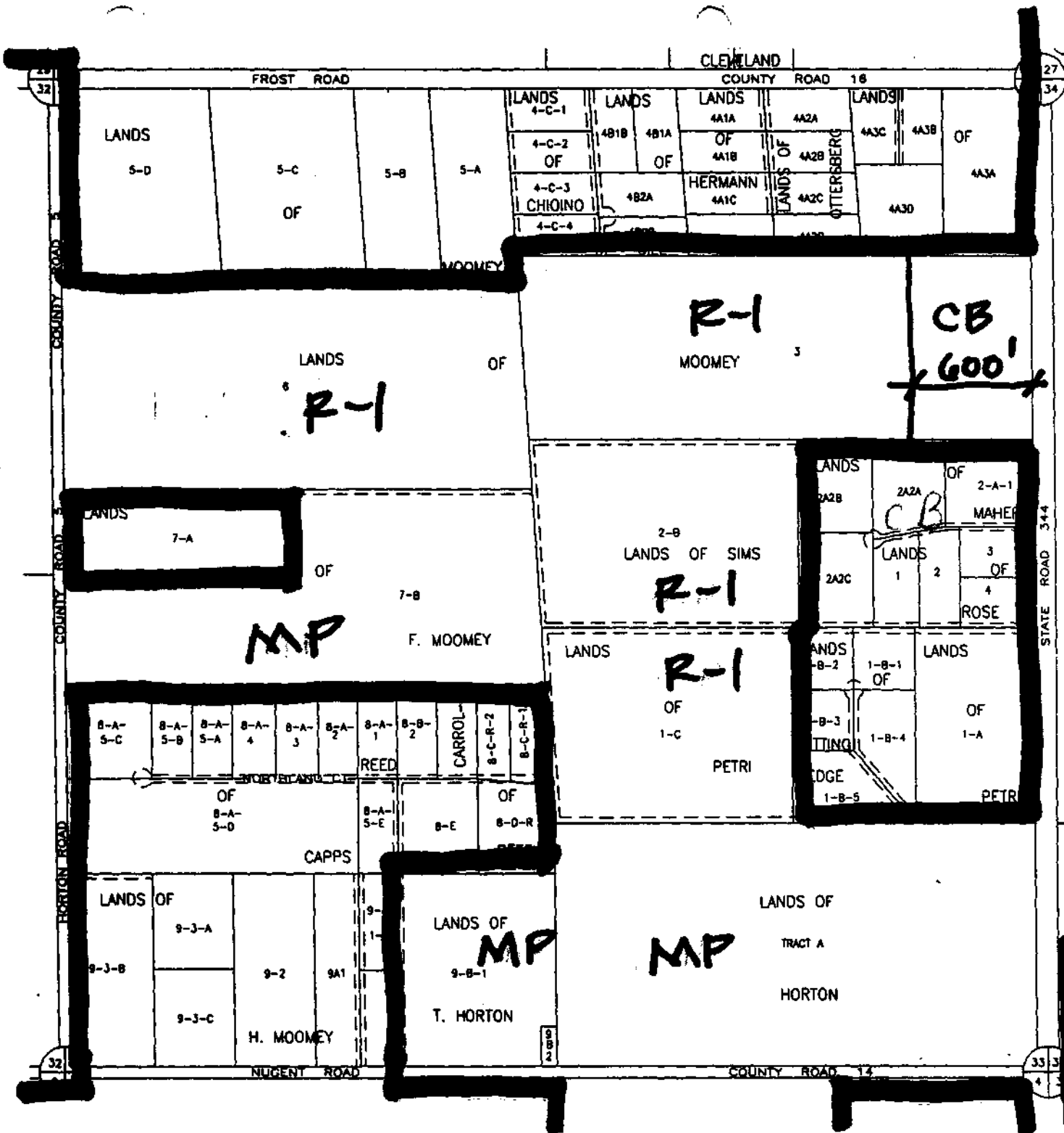


LEGAL DESCRIPTION  
T 11 N  
R 7 E  
SEC 32

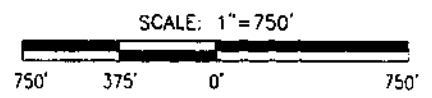
UNIFORM PROPERTY CODE  
1038061

MAP AMENDED THROUGH  
JULY 1, 1997

F 38



COPYRIGHT 1999  
 ALL RIGHTS RESERVED  
 ASSOCIATED  
 DEVELOPMENT, INC.



LEGAL DESCRIPTION  
 T 11 N  
 R 7 E  
 SEC 33

UNIFORM PROPERTY CODE  
 1039061

MAP AMENDED THROUGH  
 JULY 1, 1999

F 39

28 27  
33 34

28 28  
33 35

STATE ROAD 472

KINGS HIGHWAY

NE 1/4 NW 1/4

**MP**

COPYRIGHT 1999  
ALL RIGHTS RESERVED  
ASSOCIATED  
DEVELOPMENT, INC.



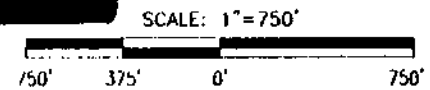
W 1/2 NW 1/4

**MP**  
VILLAGE  
SUBDIVISION

LANDS	B-1-R LANDS	LANDS	E
A-1	A-2	B-2-R OF	A OF
A-3	B-4-R B-3-R	LANDS	D
A-4 BLEYER	HEASLIP	LANDS	KALMA
LANDS	LANDS	LANDS	C-1-R
C-1 OF N. FRIEDMAN	0-1 OF	B-1	B-2 OF
LANDS	R. D-2	B-3	LANDS
C-2-A OF		B-4	C-3-A OF
C-2-B			C-3-B

FIRST SECURITY BANK	B-2	B-1-A OF
LANDS	FITZPATRICK	B-1-C B-1-B
1 OF FALCON	2 OF	
3	4	B-4 B-5
RUDYS	ULLRICH	
LANDS	C-1-B OF	C-1-A
C-1-C		C-1-D HASKIN
C-2-A		C-2-B
C-3		C-2
C4R1		C2D DARDEN
C4R2		
C4R3		
C4R4		
GUELF BROS.		

**MP**  
SE 1/4



LANDS **R-1** OF C-5-R GUELF BROTHERS

LEGAL DESCRIPTION  
T 11 N  
R 7 E  
SEC 34

UNIFORM PROPERTY CODE  
1040061

MAP AMENDED THROUGH  
JULY 1, 1999

**F 40**

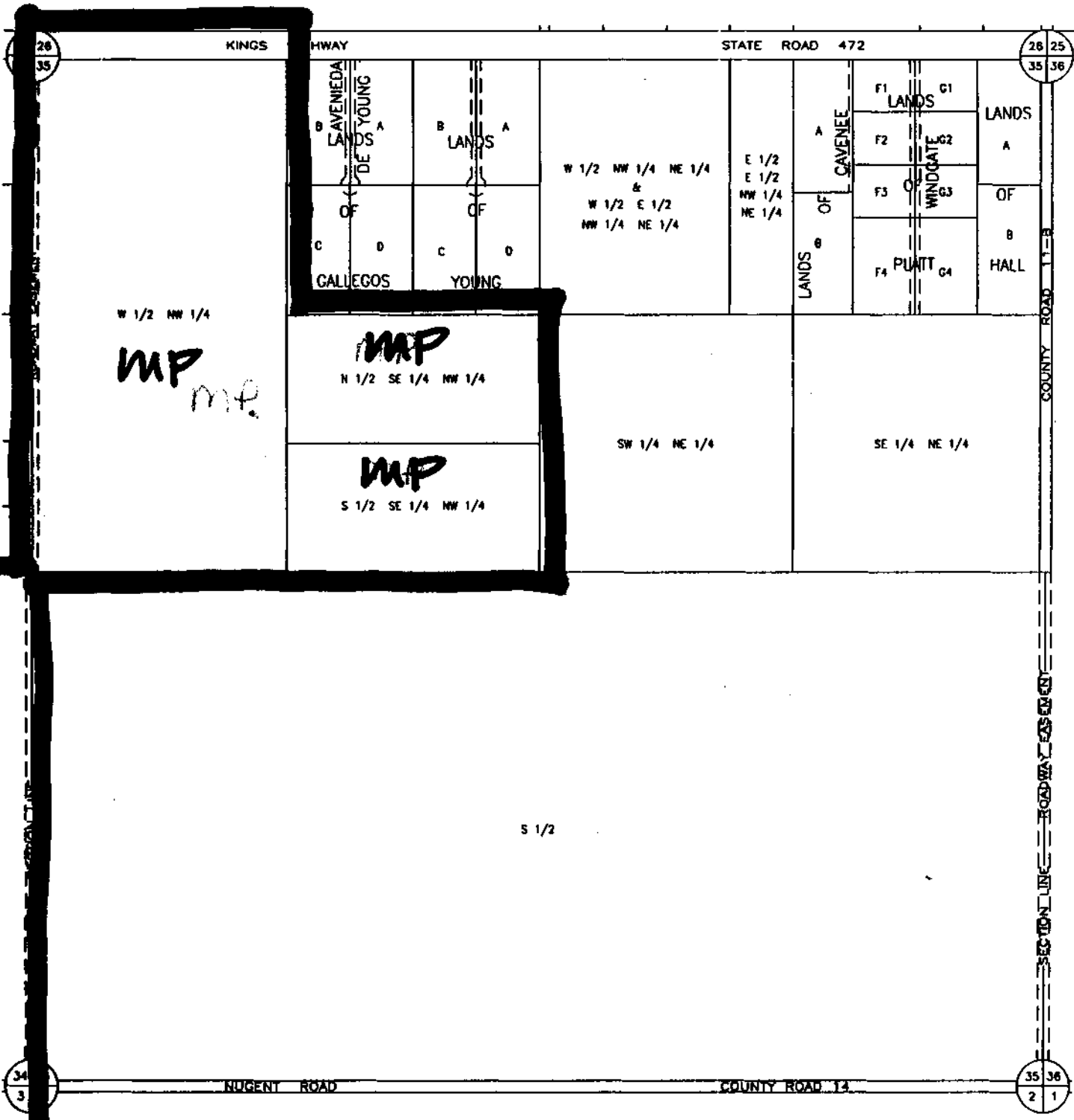
STATE ROAD 344

INDUENT ROAD

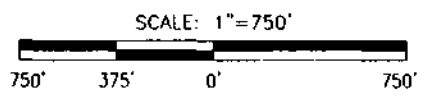
COUNTY ROAD 14

33 34  
4 3

34  
35



COPYRIGHT 1999  
 ALL RIGHTS RESERVED  
 ASSOCIATED  
 DEVELOPMENT, INC.

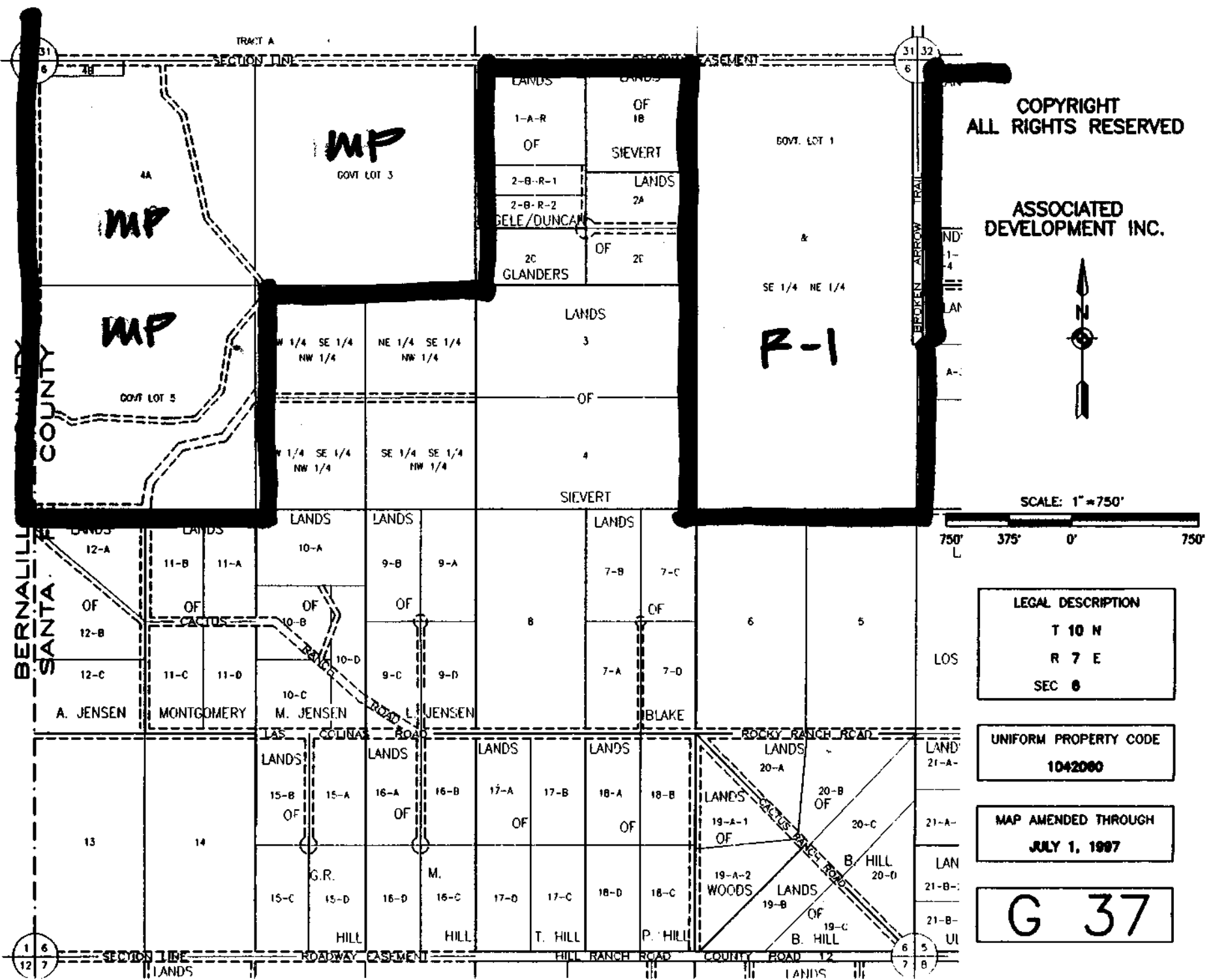


LEGAL DESCRIPTION  
 T 11 N  
 R 7 E  
 SEC 35

UNIFORM PROPERTY CODE  
 1041061

MAP AMENDED THROUGH  
 JULY 1, 1999

F 41

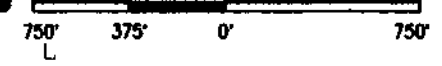


**COPYRIGHT  
ALL RIGHTS RESERVED**

**ASSOCIATED  
DEVELOPMENT INC.**



SCALE: 1" = 750'

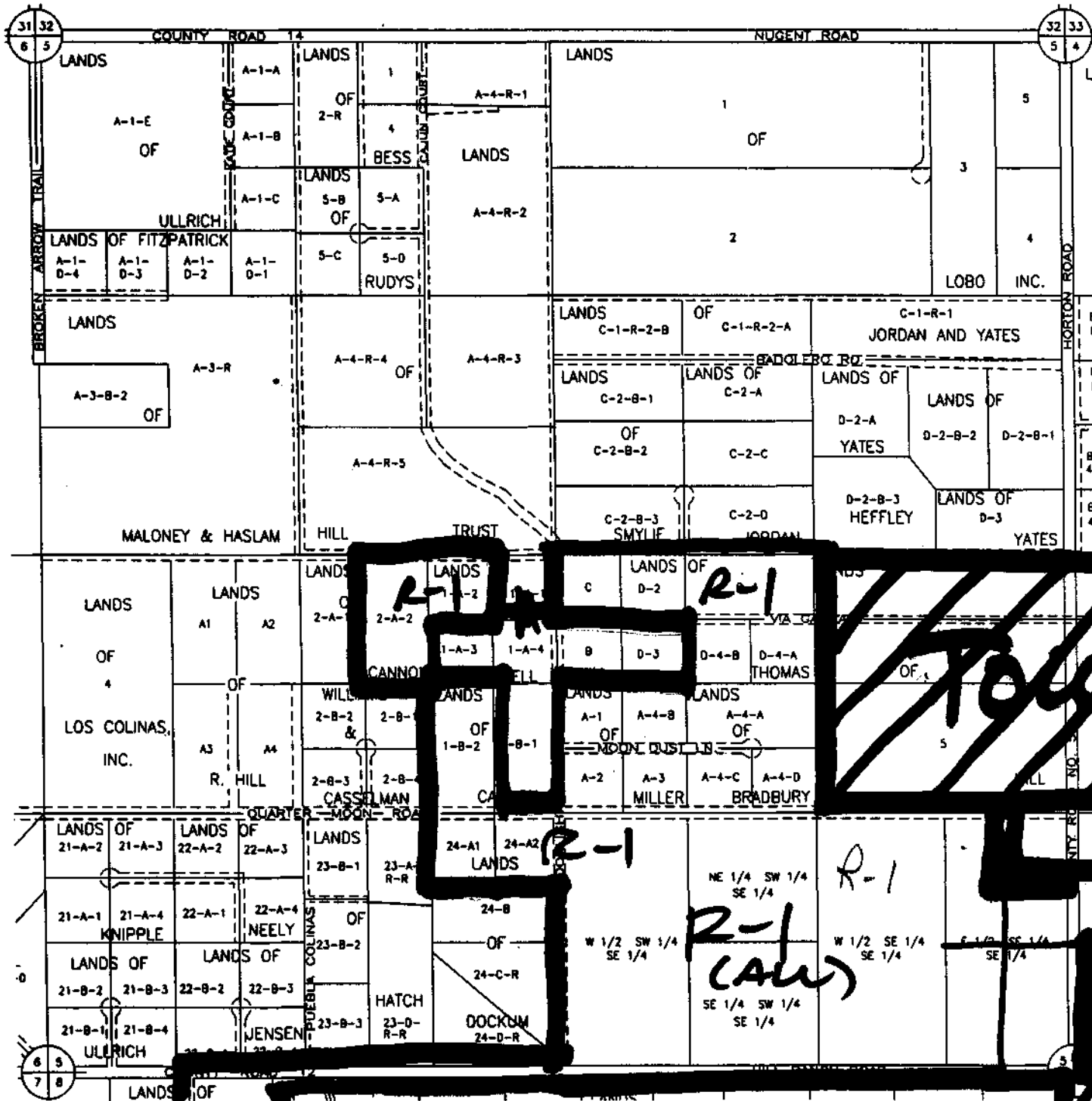


**LEGAL DESCRIPTION**  
T 10 N  
R 7 E  
SEC 6

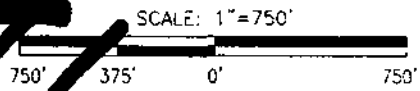
**UNIFORM PROPERTY CODE**  
1042000

**MAP AMENDED THROUGH**  
JULY 1, 1997

**G 37**



COPYRIGHT 1999  
 ALL RIGHTS RESERVED  
 ASSOCIATED  
 DEVELOPMENT, INC.

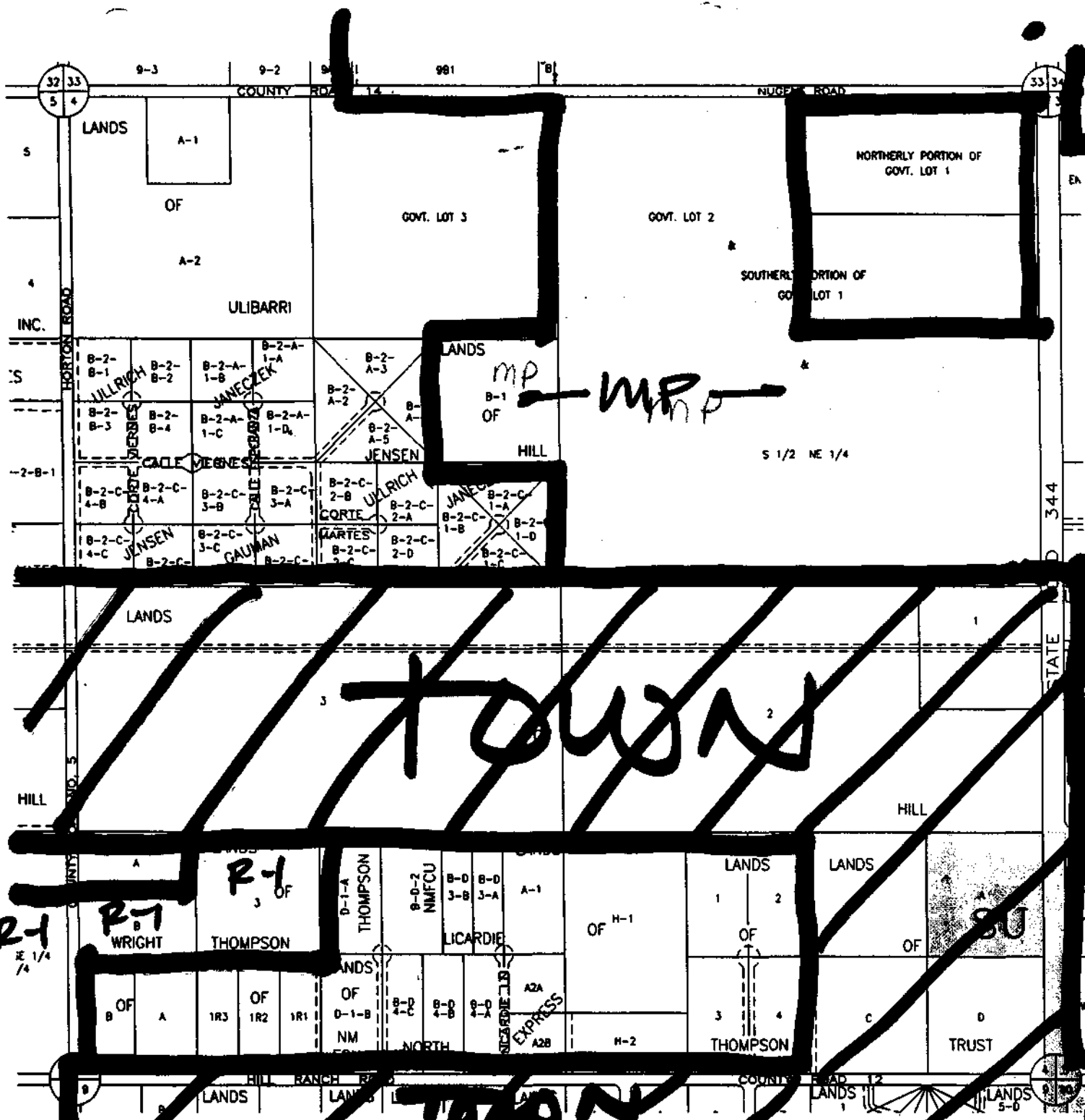


LEGAL DESCRIPTION  
 T 10 N  
 R 7 E  
 SEC 5

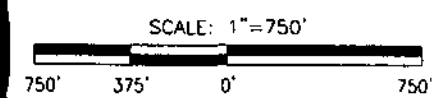
UNIFORM PROPERTY CODE  
 1042060

MAP AMENDED THROUGH  
 JULY 1, 1999

G 38



COPYRIGHT 1999  
 ALL RIGHTS RESERVED  
 ASSOCIATED  
 DEVELOPMENT, INC.



LEGAL DESCRIPTION  
 T 10 N  
 R 7 E  
 SEC 4

UNIFORM PROPERTY CODE  
 1042060

MAP AMENDED THROUGH  
 JULY 1, 1999

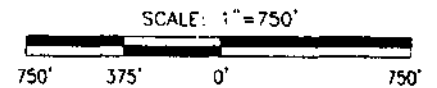
G 39

R-1  
 R-1  
 NE 1/4  
 1/4

R-1  
 3 OF

TOWN

COPYRIGHT 1999  
ALL RIGHTS RESERVED  
ASSOCIATED  
DEVELOPMENT, INC.



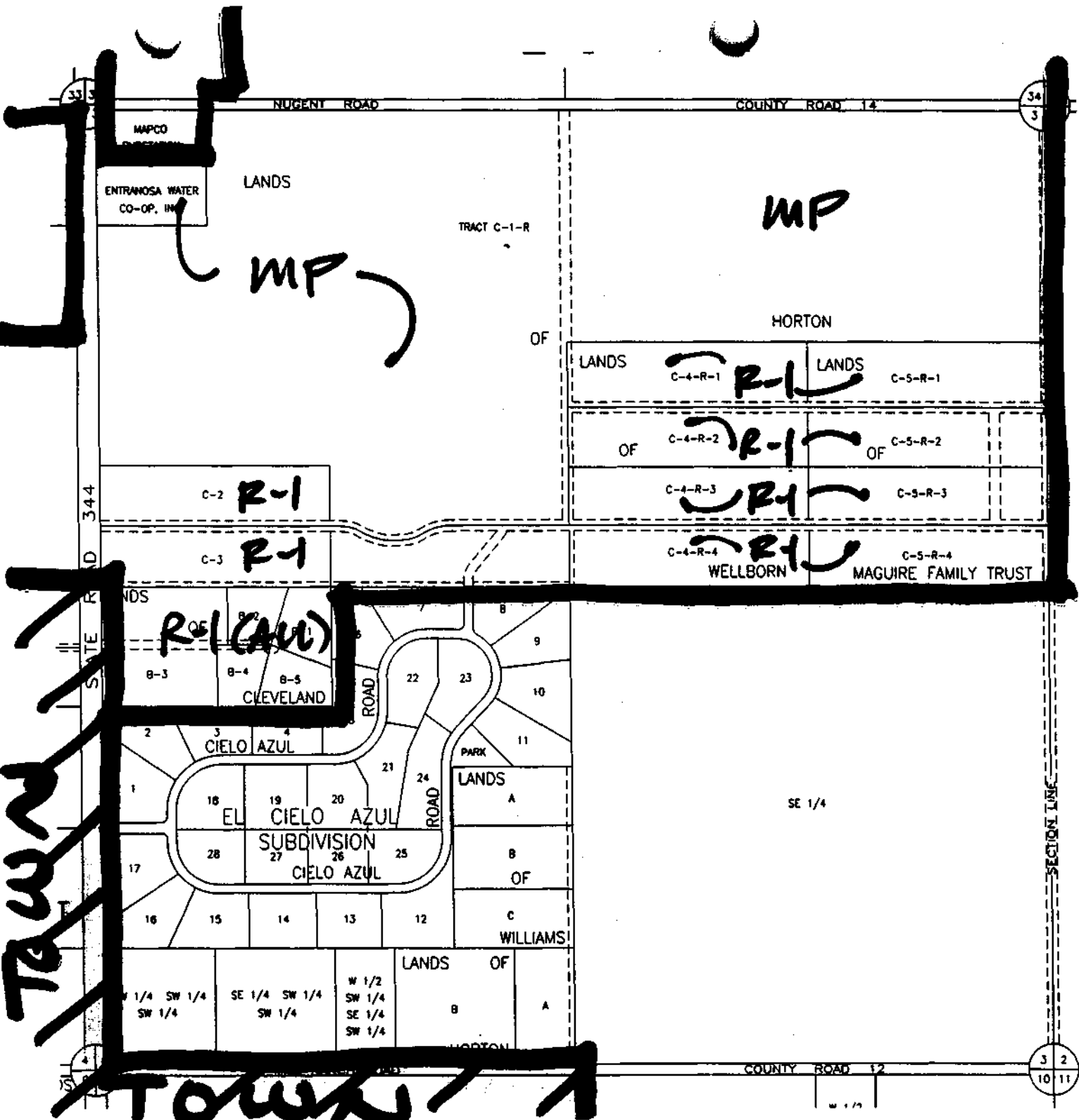
LEGAL DESCRIPTION  
T 10 N  
R 7 E  
SEC 3

UNIFORM PROPERTY CODE  
1042060

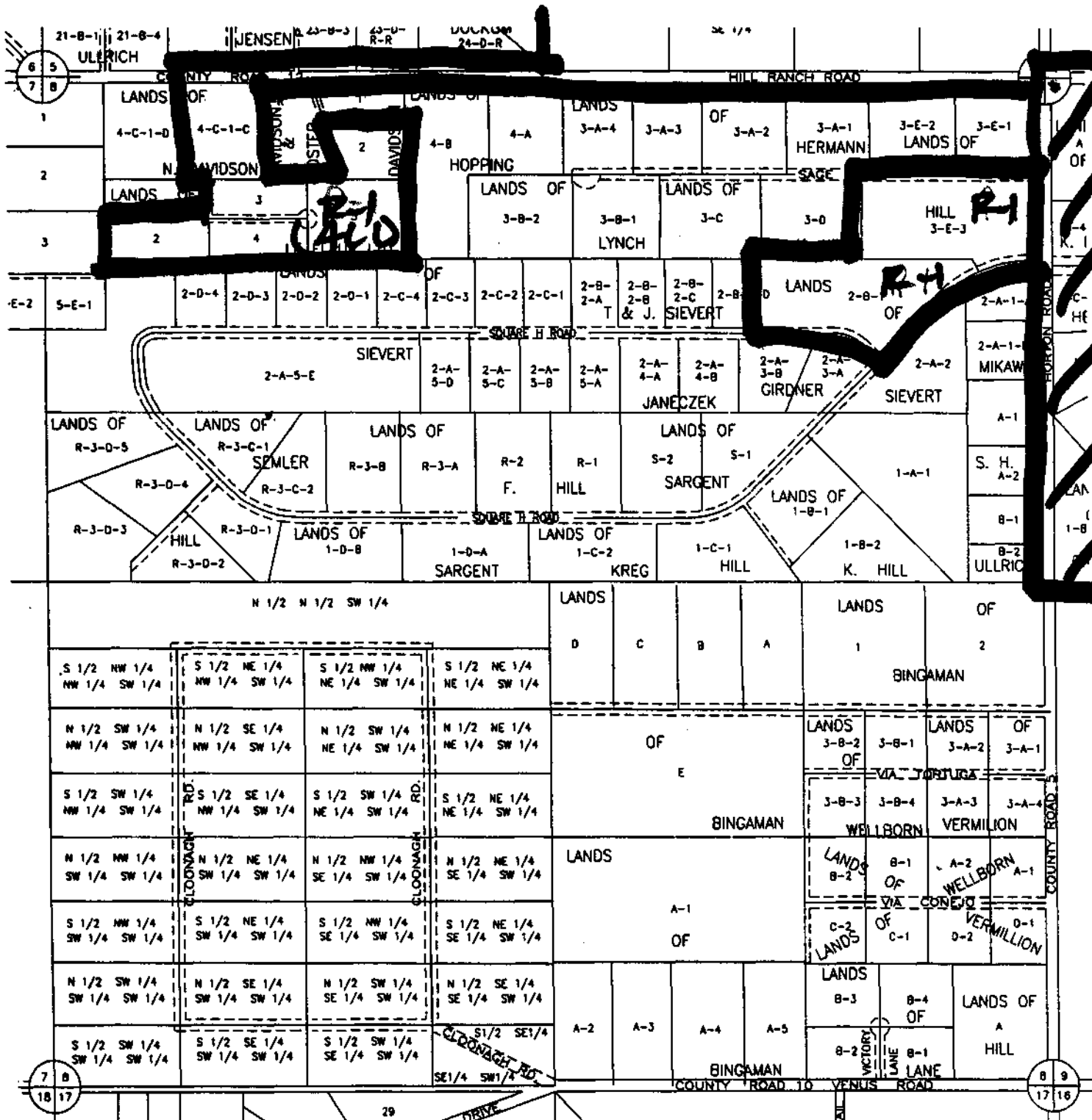
MAP AMENDED THROUGH  
JULY 1, 1999

G 40

Revised: 11/29/01



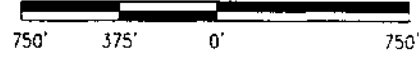




COPYRIGHT 1999  
 ALL RIGHTS RESERVED  
 ASSOCIATED  
 DEVELOPMENT, INC.

**TOWN**

SCALE: 1" = 750'



LEGAL DESCRIPTION  
 T 10 N  
 R 7 E  
 SEC 8

UNIFORM PROPERTY CODE  
 1042059

MAP AMENDED THROUGH  
 JULY 1, 1999

**H 38**

7 B  
 18 17

8 9  
 17 16